

9. Resolution approving a Facility Encroachment Agreement with CSX Transportation, Inc. in connection with Water Main Relocation in Public Easement (SW) along Martin Luther King, Jr. Street

Item Number: 9



CITY OF GRAND RAPIDS AGENDA ACTION REQUEST

DATE: March 25, 2025

TO: Mark Washington, City Manager

COMMITTEE: Community Development Committee

LIAISON: Mary Kate Berens, Deputy City Manager

FROM: Tim Burkman, City Engineer
Engineering

SUBJECT: **Resolution approving a Facility Encroachment Agreement with CSX Transportation, Inc. in connection with Water Main Relocation in Public Easement (SW) along Martin Luther King, Jr. Street**

The Michigan Department of Transportation (MDOT) has an upcoming project to replace the East Ramp Bridge at Martin Luther King, Jr. Street. The bridge replacement runs from the on/off ramps of northbound US-131 to Buchanan Avenue. There is an existing 12" water main running under the length of the bridge and it is necessary to replace the water main to avoid conflicts with new bridge piers and foundations.

The new water main location traverses under railroad tracks owned by CSX Transportation, Inc (CSX). The Facility Encroachment Agreement provides for approval of the new main location and establishes the coordination requirements of the construction, protection services and insurance requirements. This project will be bid through MDOT in an upcoming bid-letting in June of 2025

The attached resolution provides for the approval of a Facility Encroachment Agreement with CSX Transportation, Inc. to facilitate the water main relocation within CSX right of way.

The cost of the water main relocation and the fees associated with the Facility Encroachment Agreement are being funded by MDOT.

cc: Wayne Jernberg

#24022

Your COMMUNITY DEVELOPMENT COMMITTEE recommends approving a Facility Encroachment Agreement with CSX Transportation Inc. (CSX) in connection with Water Main Relocation in Public Easement (SW) along Martin Luther King, Jr Street.

WHEREAS, it is necessary to approve a Facility Encroachment Agreement with CSX Transportation Inc. in connection with Water Main Relocation in Public Easement (SW) along Martin Luther King, Jr Street; therefore

RESOLVED:

1. That the City enter into a Facility Encroachment Agreement with CSX Transportation Inc. and that, upon approval as to form by the City Attorney, the Mayor and City Clerk be authorized to execute said Agreement on behalf of the City; and
2. That a copy of this resolution be available for inspection at the City Clerk's Office, 2nd Floor, City Hall, 300 Monroe Avenue N.W., Grand Rapids, Michigan 49503.

CORRECT IN FORM

DEPARTMENT OF LAW

Item Number: 9



CITY OF GRAND RAPIDS AGENDA ACTION REQUEST

DATE: March 25, 2025

TO: Mark Washington, City Manager

COMMITTEE: Community Development Committee

LIAISON: Mary Kate Berens, Deputy City Manager

FROM: Tim Burkman, City Engineer
Engineering

SUBJECT: **Resolution approving a Facility Encroachment Agreement with CSX Transportation, Inc. in connection with Water Main Relocation in Public Easement (SW) along Martin Luther King, Jr. Street**

The Michigan Department of Transportation (MDOT) has an upcoming project to replace the East Ramp Bridge at Martin Luther King, Jr. Street. The bridge replacement runs from the on/off ramps of northbound US-131 to Buchanan Avenue. There is an existing 12" water main running under the length of the bridge and it is necessary to replace the water main to avoid conflicts with new bridge piers and foundations.

The new water main location traverses under railroad tracks owned by CSX Transportation, Inc (CSX). The Facility Encroachment Agreement provides for approval of the new main location and establishes the coordination requirements of the construction, protection services and insurance requirements. This project will be bid through MDOT in an upcoming bid-letting in June of 2025

The attached resolution provides for the approval of a Facility Encroachment Agreement with CSX Transportation, Inc. to facilitate the water main relocation within CSX right of way.

The cost of the water main relocation and the fees associated with the Facility Encroachment Agreement are being funded by MDOT.

cc: Wayne Jernberg

#24022

Your COMMUNITY DEVELOPMENT COMMITTEE recommends approving a Facility Encroachment Agreement with CSX Transportation Inc. (CSX) in connection with Water Main Relocation in Public Easement (SW) along Martin Luther King, Jr Street.

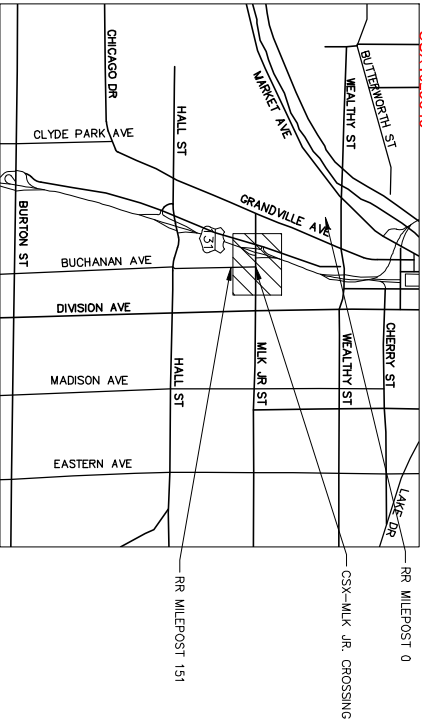
WHEREAS, it is necessary to approve a Facility Encroachment Agreement with CSX Transportation Inc. in connection with Water Main Relocation in Public Easement (SW) along Martin Luther King, Jr Street; therefore

RESOLVED:

1. That the City enter into a Facility Encroachment Agreement with CSX Transportation Inc. and that, upon approval as to form by the City Attorney, the Mayor and City Clerk be authorized to execute said Agreement on behalf of the City; and
2. That a copy of this resolution be available for inspection at the City Clerk's Office, 2nd Floor, City Hall, 300 Monroe Avenue N.W., Grand Rapids, Michigan 49503.

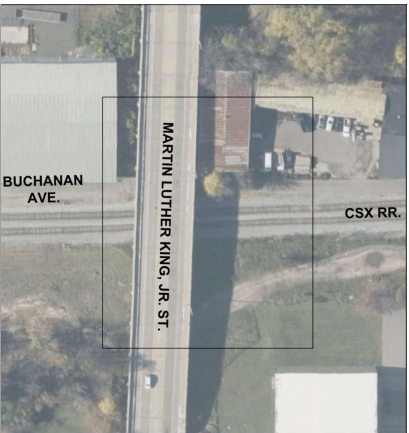
CORRECT IN FORM

DEPARTMENT OF LAW



CSX1029645

PROJECT LOCATION MAP
GENERAL VIEW



PROJECT LOCATION MAP
BLOWUP VIEW
SCALE: 1"=100'



PROJECT LOCATION MAP
INTERMEDIATE VIEW
SCALE: 1"=200'



OWNER: CITY OF GRAND RAPIDS
CITY: GRAND RAPIDS
COUNTY: KENT
STATE: MICHIGAN

EXHIBIT A



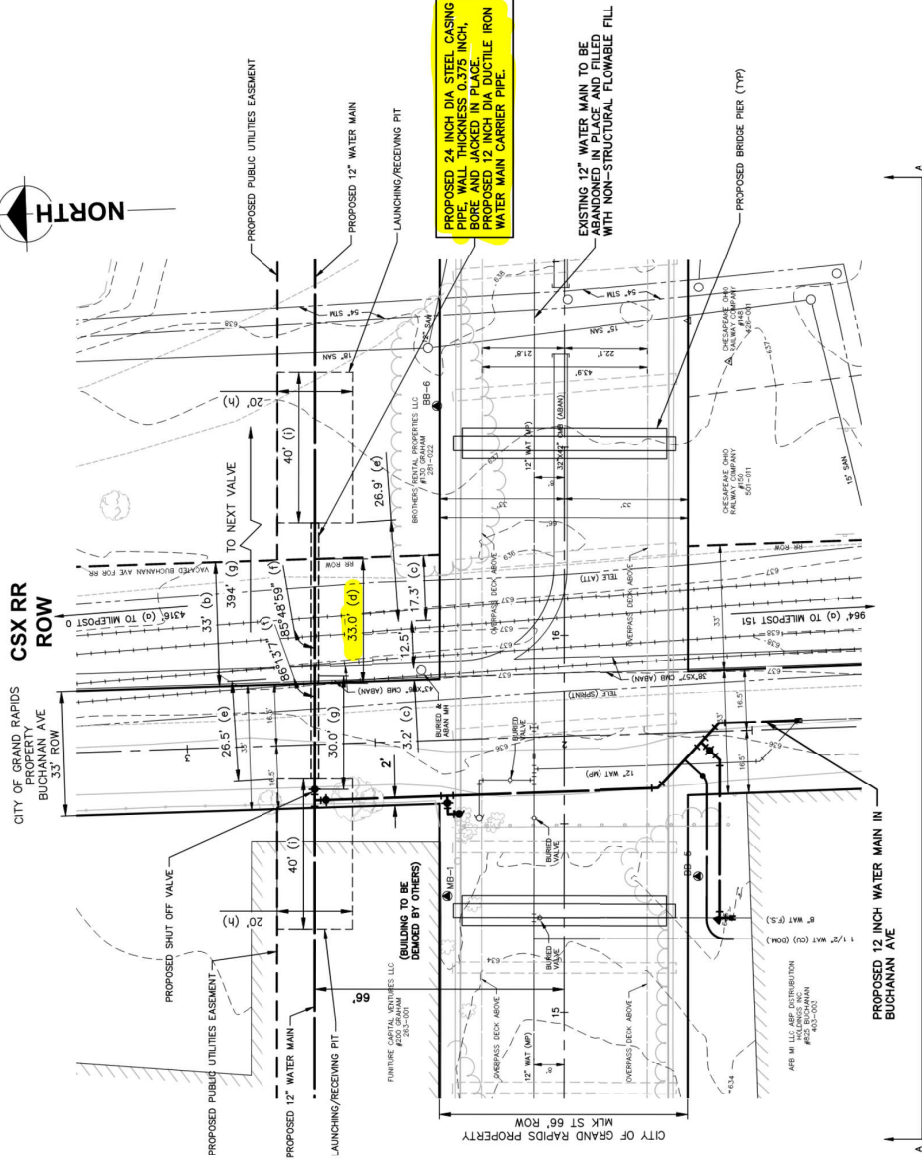
Not to scale
1"=100' (unless
otherwise noted)
This drawing is
for the project
only. It is not to
be used for any
other purpose.

City of Grand Rapids
CSX Railroad & Martin Luther King, Jr. St.
Water Main Relocation in Public Easement (SW)
Along Martin Luther King, Jr. Boulevard

PROJECT NO.
240709
FIGURE NO.
1

02/04/2025

PROPOSED WATER MAIN RELOCATION IN PUBLIC EASEMENT
ALONG MARTIN LUTHER KING, JR. ST - PLAN VIEW



- (a) Distance from crossing to nearest actual milepost (___ feet from MP ___). OR: Distance from crossing to centerline of nearest public road intersection (include DOT Crossing #)
- (b) Width of CSX R/W
- (c) Distance from centerline of track to R/W
- (d) Total length of pipe on CSX R/W [See CSXT Pipeline Spec. page 13, C, i, ii]
- (e) Distance from centerline of nearest track to face of pits or poles at a 90 degree angle to the track(s)
- (f) Angle of crossing [See CSXT Pipeline Spec. page 5, B, ii]
- (g) IF CONTENTS UNDER PRESSURE: Distance of shut-off valves from centerline of nearest track (min. 2,000' from nearest track on each side of R/W) [See CSXT Pipeline Spec. page 20, I, ii]
- (h) Width of Launching/Receiving Pit
- (i) Length of Launching/Receiving Pit

KEEP THE BORE PITS
OUTSIDE CSX ROW AND
TREL LINE

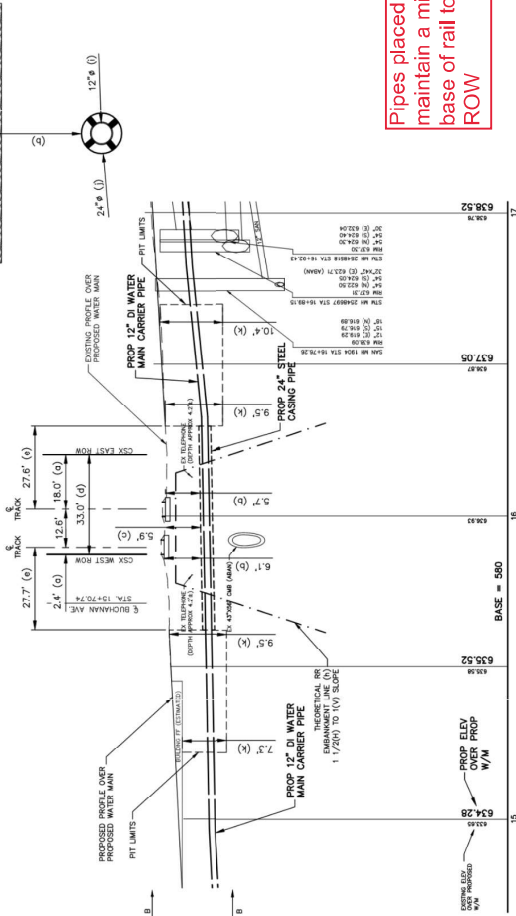


Engineers | Architects | Scientists | Constructors

Location:	CITY OF GRAND RAPIDS, MICHIGAN				
Latitude:	42.9487672				
Longitude:	-85.6724138				
Drawing No.:	1	Sheet	1	of	2
Drawing Date:	10/31/2024	Last Revised:			
Drawing Scale:	1	Inches =	20	Feet	

PROPOSED WATER MAIN RELOCATION IN PUBLIC EASEMENT
ALONG MARTIN LUTHER KING, JR. ST - PROFILE VIEW A-A


PIPELINE CROSS-SECTION
VIEW B-B



NOTES:
REFER TO HDD INTERIM GUIDELINES AND ENGINEERING SPECIFICATIONS IN THE APPLICATION PACKAGE FOR ADDITIONAL INFORMATION AND GUIDANCE.
LOCATE CSX'S SIGNAL FACILITIES AND/OR WARNING DEVICES AT PROPOSED FACILITY CROSSING LOCATIONS, INCLUDING: FLASHERS, GATES AND SHOW CLEARANCES.
CASING PIPE ENDS MUST BE SEALED, IF APPLICABLE. HDPE DR II OR BETTER MUST BE USED.
YOUR DRAWING MUST SHOW ALL SETS OF TRACKS PRESENT AT THE PROPOSED UTILITY CROSSING LOCATION.
CSX BORE PLAN TEMPLATE AND FRACTION MITIGATION PLAN TO BE SUBMITTED TO CSX FOR REVIEW AND APPROVAL PRIOR TO CONSTRUCTION.

Pipes placed under CSXT track(s) shall maintain a minimum distance of 5.5 feet from base of rail to top of pipe through entire CSX ROW

LEGEND		PIPELINE CONTENT DETAILS	
Letter	Description	Commodity Description	Water Main
(a)	Distance from centerline of track to CSX R/W	Maximum Operating Pressure:	
(b)	Distance from base-of-rail to top-of-casing	Is Commodity Flammable:	<input type="checkbox"/> Yes <input checked="" type="checkbox"/> No
(c)	Distance from base-of-ditch to top-of-casing	CARRIER/CASING PIPE DETAILS	
(d)	Total length of pipe on CSX R/W	Carrier Pipe	
(e)	Distance from centerline of nearest track to face of pile at a 90 degree angle to the track(s)	Pipe Material:	Steel - Grade B
(f)	Distance from top-of-vent pipe to ground surface (if minimum required)	Material Specifications & Grade:	ASTM A-139
(g)	Distance from centerline of track to vent pipe at a 90 degree angle to the track(s)	Specified Minimum Yield Strength:	42,000 psi
(h)	Theoretical Embankment Line: Starts 12' from centerline of track, and extends away from track at a slope of 1.5' over and 1' down.	Nominal Size Outside Diameter (inches):	24"
(i)	Carrier pipe diameter	Wall Thickness (inches):	0.375"
(j)	Casing pipe diameter	Type of Seam:	N/A
(k)	Depth of Launching/Receiving Pit	Type of Joints:	Gasket Bell & Spigot
		Tunnel Liner Plates Required:	<input checked="" type="checkbox"/> Yes <input type="checkbox"/> No
		Cathodic Protection:	<input checked="" type="checkbox"/> Yes <input type="checkbox"/> No
		Protective Coating:	<input checked="" type="checkbox"/> Yes <input type="checkbox"/> No
		Temp. Track Support or Rip-Rap Req.:	<input checked="" type="checkbox"/> Yes <input type="checkbox"/> No
			Mist Describe & Show on Dwg.



Engineers | Architects | Scientists | Constructors

Location: MLK Jr. St - Grand Rapids, MI

Latitude: N 42 56 55

Longitude: W 85 40 20

Drawing No.: 2

Sheet: 2 of 2

Drawing Date: 10/31/24

Drawing Scale: V 10 inches = 10 feet

Drawing Scale: H 1 inch = 20 feet

PROJECT LOCATION MAP 

GENERAL VIEW

PLOT INFO: Z:\2024\2407\HICAD\SUPPORT\RR CROSSING\CSX\CSX.MLK PROJECT LOCATION MAP.DWG LAYOUT: 1 DATE: 10/29/2024 TIME: 5:13:53 PM USER: MWHCH

BUCHANAN
AVE.

MARTIN LUTHER KING, JR. ST.

CSX RR.

PROJECT LOCATION MAP
BLOWUP VIEW
SCALE: 1"=100'

EXHIBIT A

Century Ave.

US-131

WATCO/GRAND ELK RR.

BUCHANAN AVE.

CSX RR.

MARTIN LUTHER KING, JR. ST.
(FORMERLY FRANKLIN ST.)

COMMONS AVE.

ANTIONE ST.

PRIVATE ST.

GRAHAM ST.

GRANT ST.

IONIA AVE.

PROJECT LOCATION MAP
INTERMEDIATE VIEW
SCALE: 1"=200'

02/04/2025

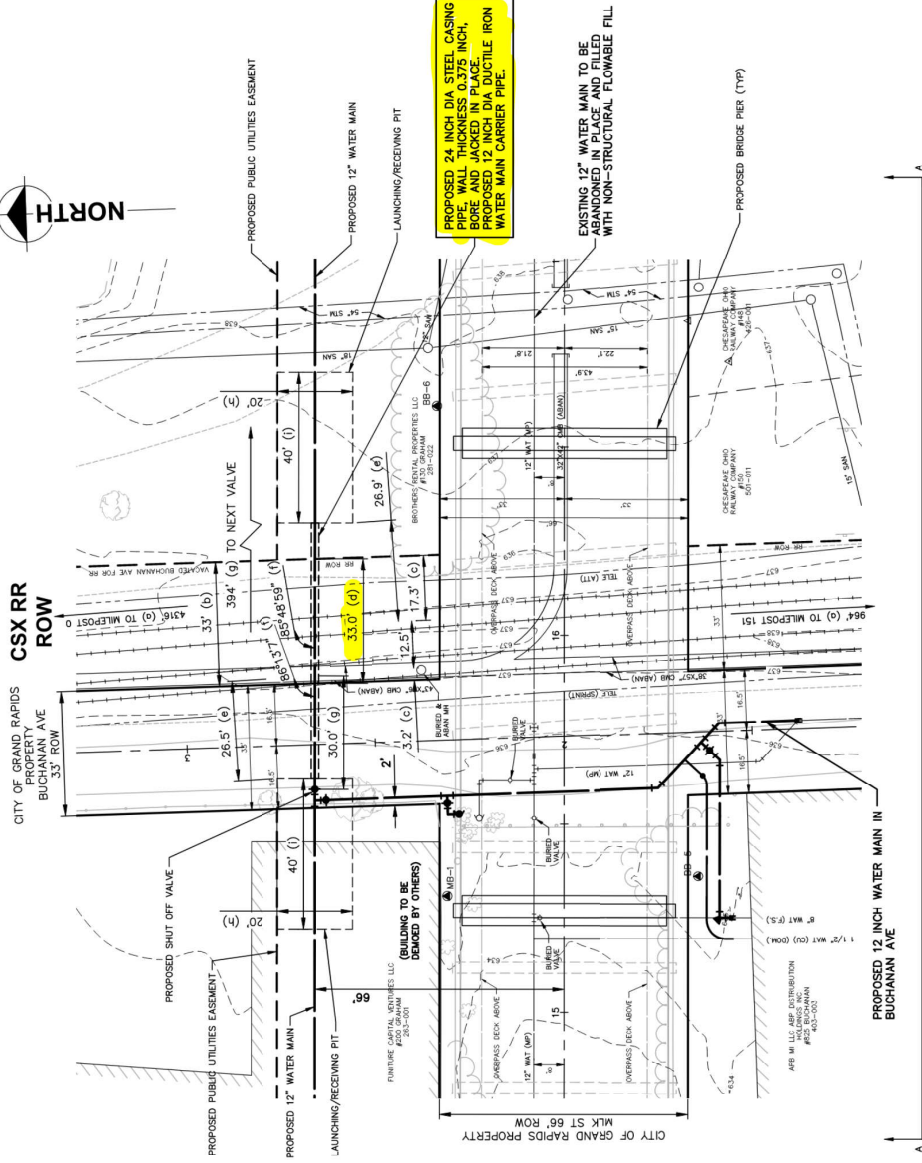
	PROJECT NO.
	240709
	FIGURE NO.
	1
125	

City of Grand Rapids
CSX Railroad & Martin Luther King, Jr. St.
Water Main Relocation in Public Easement (SW)
Along Martin Luther King, Jr. Boulevard

make a copy is intended to be 11"x17" when photocopied. See the indicated and graphic quality may not be accurate for any other size.



PROPOSED WATER MAIN RELOCATION IN PUBLIC EASEMENT
ALONG MARTIN LUTHER KING, JR. ST - PLAN VIEW



LEGEND

NOTES:

EXHIBIT A

- (a) Distance from crossing to nearest actual milepost (___ feet from MP ___). OR: Distance from crossing to centerline of nearest public road intersection (include DOT Crossing #)
- (b) Width of CSX R/W
- (c) Distance from centerline of track to R/W
- (d) Total length of pipe on CSX R/W [See CSXT Pipeline Spec. page 13, C, i, ii]
- (e) Distance from centerline of nearest track to face of pits or poles at a 90 degree angle to the track(s)
- (f) Angle of crossing [See CSXT Pipeline Spec. page 5, B, ii]
- (g) IF CONTENTS UNDER PRESSURE: Distance of shut-off valves from centerline of nearest track (min. 2,000' from nearest track on each side of R/W) [See CSXT Pipeline Spec. page 20, I, ii]
- (h) Width of Launching/Receiving Pit
- (i) Length of Launching/Receiving Pit

KEEP THE BORE PITS
OUTSIDE CSX ROW AND
TREL LINE

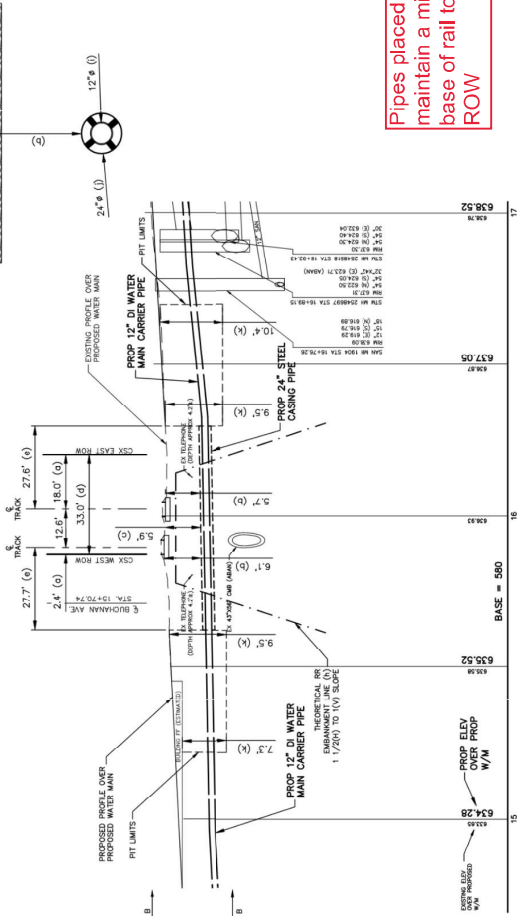


Engineers | Architects | Scientists | Constructors

Location:	CITY OF GRAND RAPIDS, MICHIGAN				
Latitude:	42.9487672				
Longitude:	-85.6724138				
Drawing No.:	1	Sheet	1	of	2
Drawing Date:	10/31/2024		Last Revised:		
Drawing Scale:	1	Inches =	20	Feet	

PROPOSED WATER MAIN RELOCATION IN PUBLIC EASEMENT
ALONG MARTIN LUTHER KING, JR. ST - PROFILE VIEW A-A

PIPELINE CROSS-SECTION
VIEW B-B



NOTES:

REFER TO HDD INTERIM GUIDELINES AND ENGINEERING SPECIFICATIONS IN THE APPLICATION PACKAGE FOR ADDITIONAL INFORMATION AND GUIDANCE.

LOCATE CSX'S SIGNAL FACILITIES AND/OR WARNING DEVICES AT PROPOSED FACILITY CROSSING LOCATIONS, INCLUDING: CROSSING, FLASHERS, GATES AND SHOW CLEARANCES.


CASING PIPE ENDS MUST BE SEALED. IF APPLICABLE, HDPE DR II OR BETTER MUST BE USED.

YOUR DRAWING MUST SHOW ALL SETS OF TRACKS PRESENT AT THE PROPOSED UTILITY CROSSING LOCATION

CSX BORE PLAN TEMPLATE AND FRACTION MITIGATION PLAN TO BE SUBMITTED TO CSX FOR REVIEW AND APPROVAL PRIOR TO CONSTRUCTION

Pipes placed under CSXT track(s) shall maintain a minimum distance of 5.5 feet from base of rail to top of pipe through entire CSX ROW

LEGEND		PIPELINE CONTENT DETAILS	
Letter	Description	Commodity Description	Water Main
(a)	Distance from centerline of track to CSX R/W	Maximum Operating Pressure:	
(b)	Distance from base-of-rail to top-of-casing	Is Commodity Flammable:	<input type="checkbox"/> Yes <input checked="" type="checkbox"/> No
(c)	Distance from base-of-ditch to top-of-casing	CARRIER/CASING PIPE DETAILS	
(d)	Total length of pipe on CSX R/W	Carrier Pipe	
(e)	Distance from centerline of nearest track to face of pile at a 90 degree angle to the track(s)	Pipe Material:	Steel - Grade B
(f)	Distance from top-of-vent pipe to ground surface (if minimum required)	Material Specifications & Grade:	ASTM A-139
(g)	Distance from centerline of track to vent pipe at a 90 degree angle to the track(s)	Specified Minimum Yield Strength:	42,000 psi
(h)	Theoretical Embankment Line: Starts 12' from centerline of track, and extends away from track at a slope of 1.5' over and 1' down.	Nominal Size Outside Diameter (inches):	24"
(i)	Carrier pipe diameter	Wall Thickness (inches):	0.375"
(j)	Casing pipe diameter	Type of Seam:	N/A
(k)	Depth of Launching/Receiving Pit	Type of Joints:	Gasket Bell & Spigot
		Tunnel Liner Plates Required:	<input checked="" type="checkbox"/> Yes <input type="checkbox"/> No
		Cathodic Protection:	<input checked="" type="checkbox"/> Yes <input type="checkbox"/> No
		Protective Coating:	<input checked="" type="checkbox"/> Yes <input type="checkbox"/> No
		Temp. Track Support or Rip-Rap Req.:	<input checked="" type="checkbox"/> Yes <input type="checkbox"/> No
			Must Describe & Show on Dwg.



Engineers | Architects | Scientists | Constructors

Location:

MLK Jr. St - Grand Rapids, MI

Latitude:

N 42.56 55

Longitude:

W 85.40 20 69

Drawing No.:

2

Sheet

2 of 2

Drawing Date:

10/31/24

Revised:

/ /

Drawing Scale:

1

inches =

10

feet

Drawing Scale:

1

inches =

20

feet