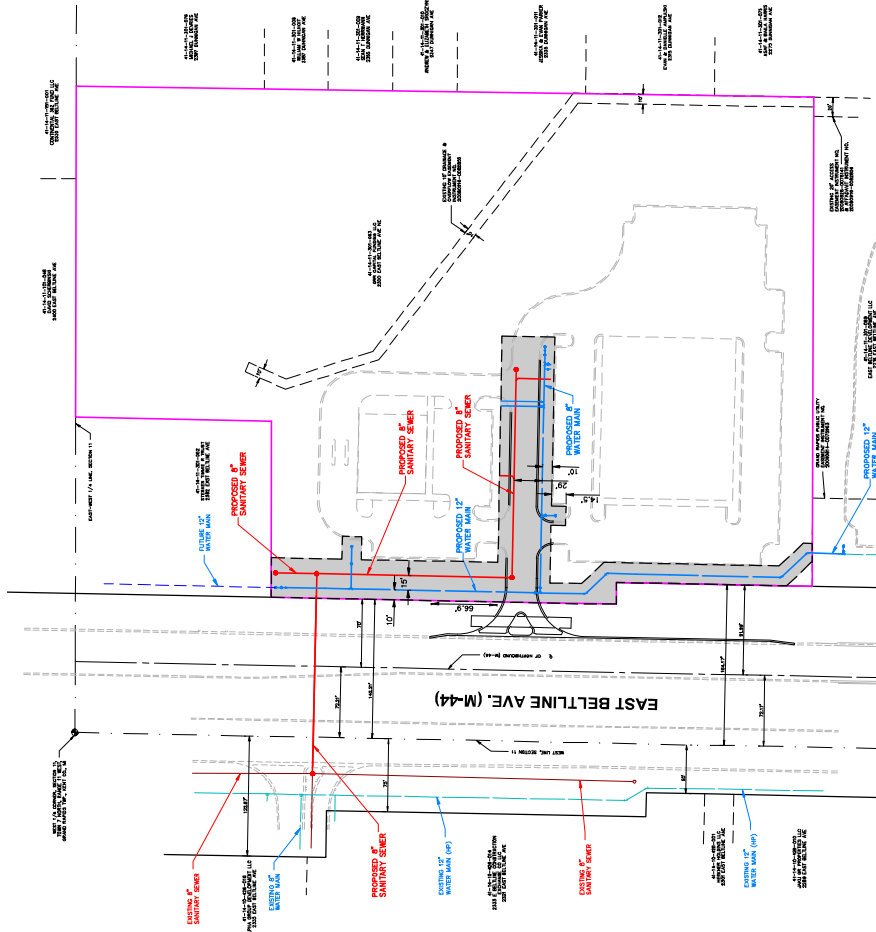
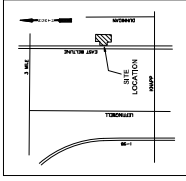


PRELIMINARY UTILITY PLAN FOR NORTH BELTLINE DEVELOPMENT GRAND RAPIDS TOWNSHIP, KENT COUNTY, MICHIGAN



GENERAL NOTES:

1. MINIMUM LINE VALVE SPACING SHALL BE DETERMINED DURING THE FINAL CHECK PRINT PROCESS.
2. MAXIMUM FIRE HYDRANT SPACING SHALL BE 300'.
3. WATER MAINS TO BE ZINC COATED.
4. STORM SEWER SHALL BE DESIGNED AROUND WATER MAIN AT STANDARD DEPTH, NOWAYS OR DEFLECTIONS ARE ALLOWED AT ANY DEVELOPMENTS.
5. MAXIMUM SANITARY SEWER MANHOLE SPACING SHALL BE 400' PER 10 STATE STANDARD.
6. PRIVATE UTILITIES (GAS, ETC.) SHALL BE MAINTAINED OUTSIDE OF THE PUBLIC UTILITY EASEMENTS EXCEPT FOR CROSSINGS.

- PROPOSED PUBLIC EASEMENT
- FUTURE WATER MAIN
 - PROPOSED WATER MAIN
 - FUTURE SANITARY
 - PROPOSED SANITARY
 - EXISTING WATER MAIN
 - EXISTING SANITARY

UNDERMINAL EQUIVANCY (SULS) AND S1 LIMITED FLOW:
BANK: 1.0 REU
25,000 SFT RETAIL = 7.2 REU
25,000 SFT RETAIL = 7.2 REU
EXPECTED SANITARY FLOW AT 100 GPD/REU = 2,500 GPD
EXPECTED WATER MAIN FLOW AND PRESSURES BASED ON
MODE AND WITH THE FLOW INFORMATION PROVIDED:
3,000 GPM @ 35.2 PSI
2,500 GPM @ 30.1 PSI

DEVELOPER:
CENTRAIR FUNDING LLC
193 MAIN ST. 2ND FLOOR, SUITE 1
PLYMOUTH, MICHIGAN 48170
DEVELOPMENT TYPE: COMMERCIAL
PLAN DATE: DECEMBER 4, 2024

Moore + Bruggink
Consulting Engineers
3000 West Ave. SE
Grand Rapids, MI 49508
616.799.8200
www.moorebruggink.com